

NORTHEAST SPRUILL OAKS LIBRARY

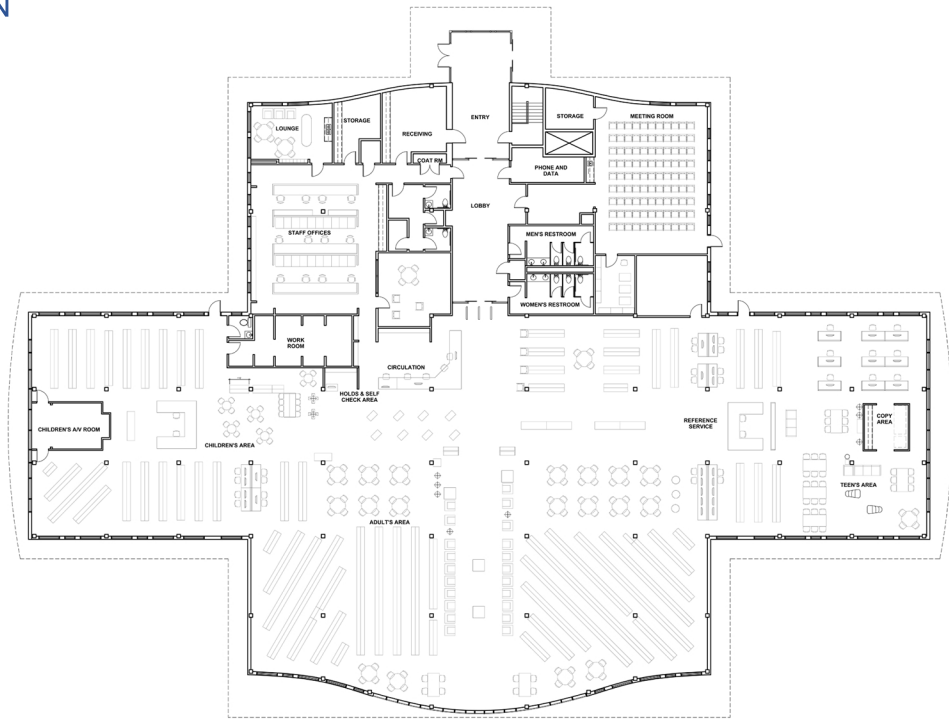
9560 SPRUILL ROAD
JOHNS CREEK, GA 30022



DESIGN SUMMARY

The proposed design for the renovation of the Northside Library located at 9560 Spruill Oaks Road, Johns Creek, GA provides space for all patrons. The existing library is a single story space containing a net floor area of approximately 24,600 sq. ft. The renovation includes finish upgrades to all areas of the library. Upon entering the library lobby, a space for Friends of the Library book donations and an information monitor will greet patrons. The building entrance lobby will receive exciting updates to provide a space for engaging in a small cafe area. New to the library is a dedicated senior's area for mature patrons to the library. Also, included in this design are four new study rooms for small collaborations. Included for the children's area are five dedicated computer stations and an area for story time. Upgrades also include a new teen's area with dedicated study areas and soft seating for comfortable reading. In an effort to streamline the "checking out" process, this design includes four new self-check machines and printing services that are centrally located within the new library design. This project is pursuing LEED Silver certification.

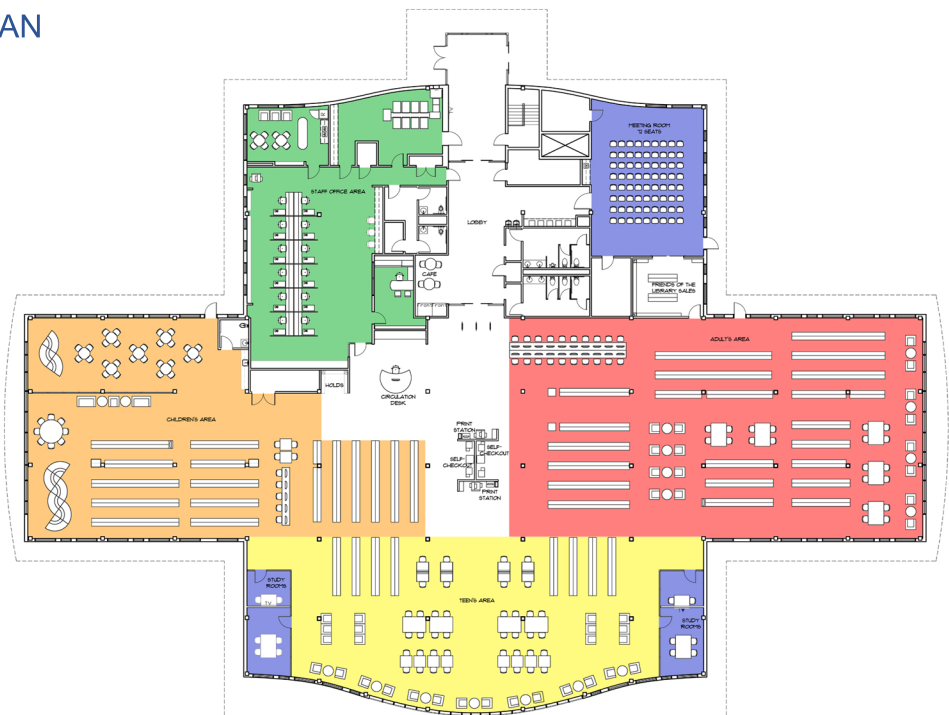
EXISTING FLOOR PLAN



LIBRARY IMPROVEMENTS

- Four state of the art study rooms
- New ADA compliant restrooms
- LED lighting
- New technology package
- Four self-checkout stations
- Finish upgrades to the meeting room
- New furniture and equipment
- Exterior walls and roof repairs
- Dedicated storage and sales area for Friends of the Library

PROPOSED FLOOR PLAN



LEGEND

- ADULT'S AREA
- TEEN'S AREA
- CHILDREN'S AREA
- MEETING SPACES
- STAFF AREA

LIBRARY SITE IMPROVEMENTS

- 1. Restoration of existing Spruill House monument
- 2. Directional arrows, stop bars, parking striping, and one way and loading zone signage for improved traffic circulation
- 3. Replace trees and sidewalk for easier pedestrian entrance to the library from parking areas
- 4. Accessible crosswalk
- 5. New monumental sign
- 6. Speed Ramp

